

FA0001-BT manual

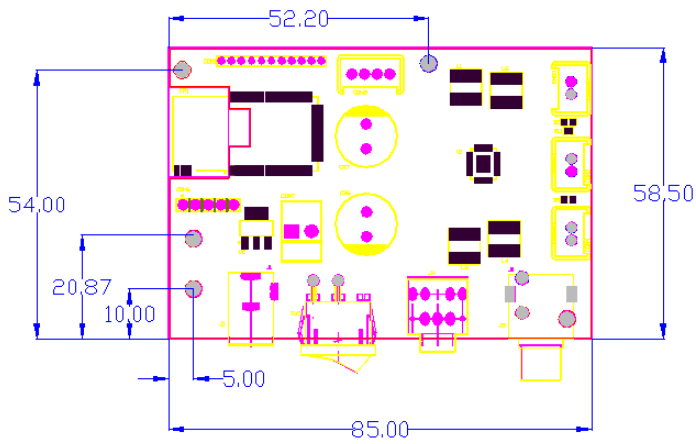
FA0001-BT Module introduction :

This module uses YAMAHA 15W stereo amplifier chip and microchip BT4.1 Bluetooth module, providing high-quality sound quality, with automatic gain and noise reduction function.

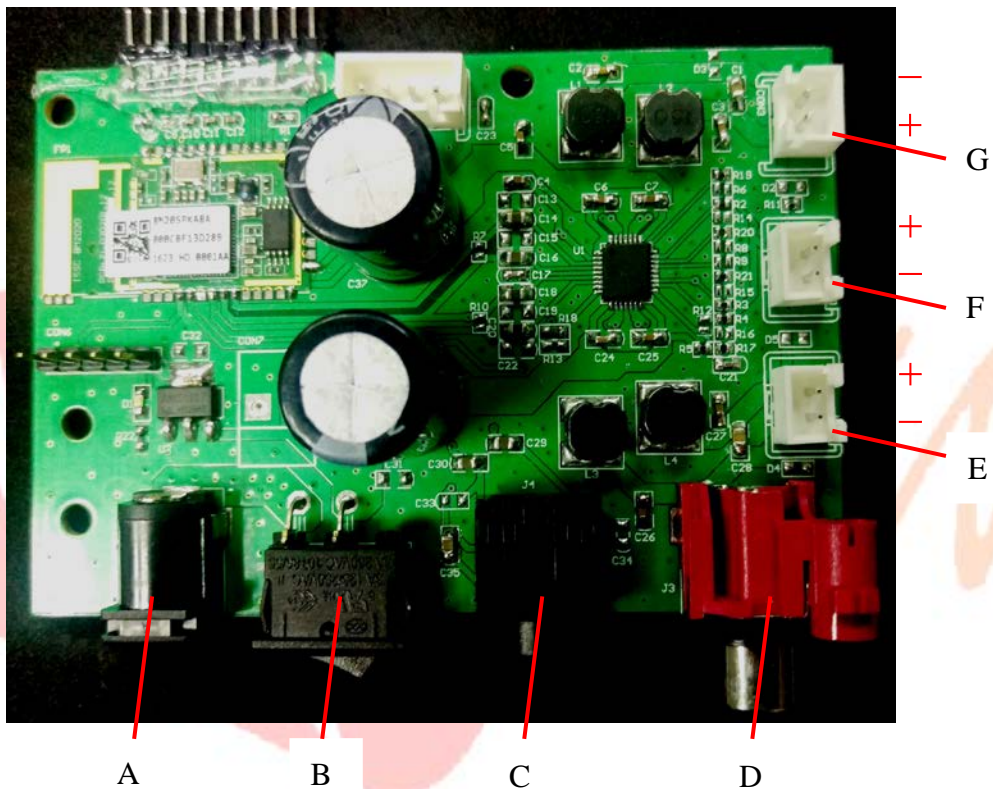
1. Specifications :

Amplifier Technical Specifications	
Maximum output power	15W, THD+N = 10%, VDD = 15 V, RL = 8 Ω
Output power efficiency	>85% (THD+N = 1%, VDD = 5 V, RL = 8 Ω, PO = 1.4 W)
Frequency Response	80Hz ~ 20KHz
Over current protection	YES
Short circuit protection	YES
Over temperature protection	YES
Power supply	15V, 2.6A
Wireless module Technical Specifications	
Bluetooth Version	Bluetooth 4.1 EDR
Operating Range	Up to 10 meters (Measured in open space. Walls and structures may affect range of device.)
Frequency	2.4GHz
Supported Bluetooth profiles	HSP, HFP, A2DP, AVRCP, PBAP, SPP
Built-in 350mAH Li-ion battery charger	

1. Module size: length X width X height = 85 x 58.5 x (26.1)mm



1. Connection method :



Description:

- A. Power input (2.54mm 2pin Wafer): supply voltage 12 ~ 15V
- B. Power switch (OFF ON)
- C. 3.5mm phone jack (optional): audio output; external active subwoofer
- D. Right channel output (RCA): Connect 4 Ω speaker unit
- E. Right channel output (2.54mm 2pin Wafer): Connect the 4 Ω speaker unit, connect the speaker with the D
- F. Power indicator
- G. Left channel output (2.54mm 4pin Wafer): Connect 4 Ω speaker unit

2. Note:

2.1 input power to be stable, to avoid surge or ripple generation.

<http://www.inhann.com.tw/>

2.2 PCBA back pin to avoid contact with metal objects.

